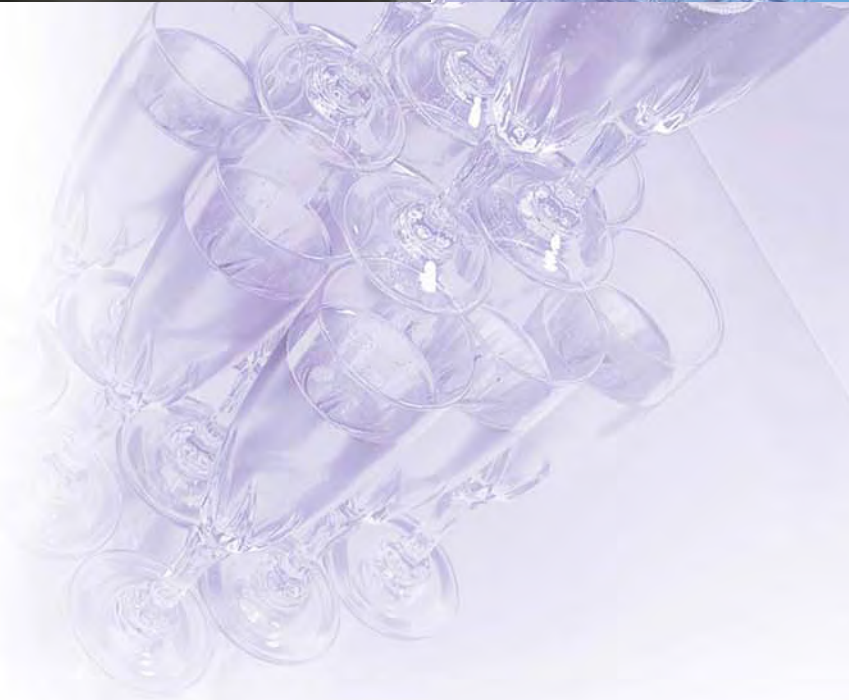
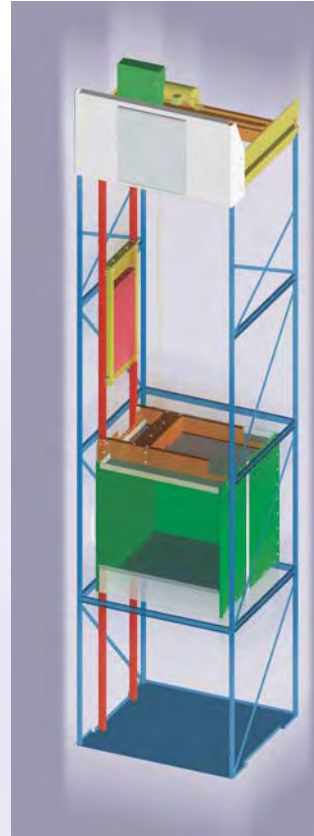


# Sherpa

Load it in complete safety



**ThyssenKrupp Elevator France**



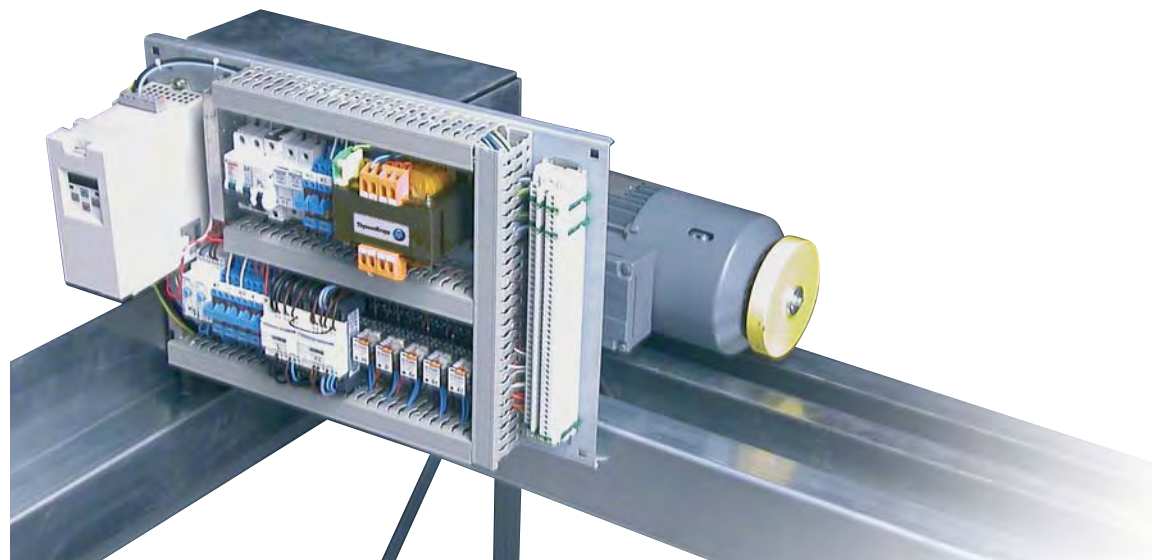
**ThyssenKrupp**

## For delicate vertical conveyance, The Equi-Lift solution



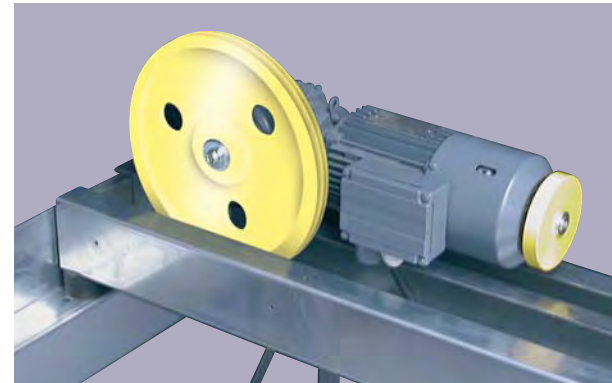
Laboratories ?... Restaurants ?... Chemical plants ?...  
The 50, 100 and 300 kg models provide all the Equi-Lift  
solution advantages enabling smooth and precise vertical  
conveyance.

Between two concepts Tradi-Lift and Vari-Lift, the Sherpa Equi-Lift  
solution combines all their qualities and advantages.  
With its frequency variation system, traction drive and  
counterbalanced, Sherpa Equi-Lift ensures smooth vertical movement  
at variable regulated speed.



# Sherpa

A range of solutions  
designed with your business in mind



## Hotels, Restaurants, Laboratories, Plants, Warehouses, Head offices, Local Government departments... At your service.

Heavy equipment?... Fragile ware?... Special loads?...

ThyssenKrupp Elevator's Sherpa range offers you specific solutions for the conveyance of your products in complete safety.

### A special Sherpa for every type of business

Appropriate to your particular needs, Sherpa is adaptable for restaurant service lifts, goods lifts, trolley lifts or document lifts by meeting your load, cubic capacity, layout or access requirements. Their toughness, flexible performance, range of accessories and options and their wide capacity range from 40 to 300 kg makes the Sherpa a "world bearer". ThyssenKrupp Elevator has also fitted them with technological features making them smart, reliable and faithful bearers, similar to their namesakes

### Easy to erect, easy to modify

The Sherpa is made up of a self-bearing frame carrying all the components (machine, controller, guide rails, shaft items). With its mechanical parts of a modular structure and factory installed and tested wiring, initial works and installation time are considerably reduced. Claddings <sup>(1)</sup> can be fitted later, according to your site design requirements. Quick installation is ensured and this includes its capacity for later modification – your Sherpa makes it really simple: the addition of a level, a change of type of service or cladding... Your Sherpa is a lift made by ThyssenKrupp Elevator. As such, it complies with goods lifts regulations and the European directives 89/336/CEE and 98/37 Machine, and is also entitled to bear EU markings. You can take on all your loads, even the most delicate.

<sup>(1)</sup> ancillary works do not generally include ThyssenKrupp Elevator products

# Tough equipment

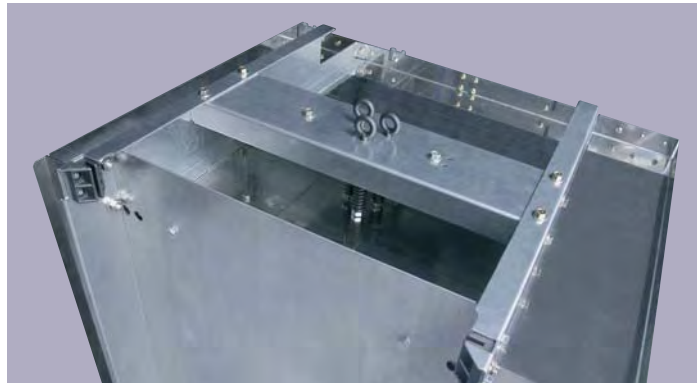
## For conventional loads

### Types of doors and cars

Appropriate to the requirements of your business

The Sherpa range offers you a wide range of hard-wearing materials. The smooth-acting be-parting door is made up of two vertically opening/closing door panels. The swing door, recommended for mobile loads, is generally located at floor level and has a side-hanging door panel.

The car is made of sheet steel. This equipment can be made of stainless steel or in plasticized, lacquered or oven-baked primer-coated sheet metal.



### Controller: touch, sight and sound

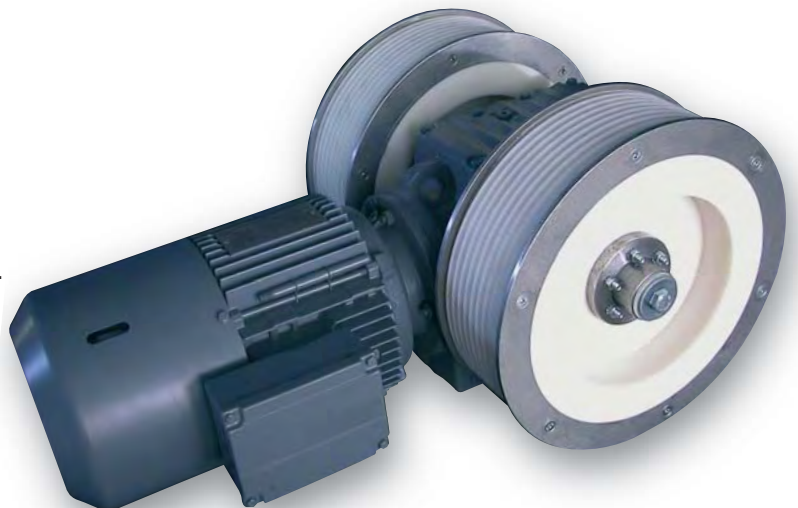
The call and send control is very efficient and easy to use. The car is controlled from the operating panel integrated in the landing architrave. The car's position and availability is displayed by light indicators and sound signals and the

control manages all calls, safety circuits and possible options.

The Sherpa's robustness and easy handling ensures enhanced competitiveness.

### Vari-Lift solution

No more surprises, abrupt movements or overturning! With its frequency variation system and drum winding, Sherpa Vari-Lift ensures vertical movement at variable regulated speed enabling high precision, non-shock halting. ...With the Vari-Lift solution, your Sherpa works for you, calmly and gently.



# Customized equipment at your service



| 3 goods lift concepts  |   |      |   |      |                              |
|--|---|------|---|------|------------------------------|
| Characteristics  | Tradi-Lift  |      | Equi-Lift                               |      | Vari-Lift                    |
| Drive  | Traction drive, counterbalanced   |      | Traction drive, counterbalanced         |      | Drum winding (maxi race 8 m) |
| Load in kg   | 50 - 100  | 300  | 50 - 100                                | 300  | 40 - 80 - 180                |
| Speed in m/s   | 0.45  | 0.30 | 0.45                                    | 0.30 | 0.30                         |
| Speed characteristics  | Single speed  |      | Variable speed                          |      | Variable speed               |
| Dimensions of car  | 500 x 500 x 800 - 600 x 600 x 800<br>800 x 800 x 800 - 1000 x 1000 x 1200   |      |   |      |                              |
| Clear opening  | According to the car height and width   |      |   |      |                              |
| Type of doors  | Bi-parting door - Access at floor level or above <sup>(2)</sup><br>Swing door - Access at floor level or above <sup>(2)</sup> |      |   |      |                              |
| Goods lift with non-standard characteristics on request, subject to compliance with current regulation |   |      |   |      |                              |
| Power voltage  | Three-phase 400 V   |      | Three-phase 400 V<br>Single phase 230 V |      | Single phase 230 V           |
| Standard finishes  | Primer-coated sheet metal or 304 <sup>(3)</sup> stainless steel 220 stain finish  |      |   |      |                              |

<sup>(2)</sup> Requires a pit - <sup>(3)</sup> Stainless steel used in a non-aggressive food environment

## 3 concepts, and + 100 versions...

Ensured modularity means a guaranteed service. The Sherpa range easily lends itself to a wide range of preferences and professional requirements. Are your loads conventional or are they more delicate? Well, you can choose between three technological concepts: Sherpa Tradi-Lift, Sherpa Equi-Lift and Sherpa Vari-Lift. Are your constraints or your locations many and varied? Your Sherpa can be installed to suit front only, through car or adjacent entry. The Sherpa range includes more than 100 different versions. Have a look at them and get our consultants to recommend the Sherpa that fits your business needs precisely.

## ...not counting accessories and options!

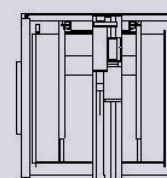
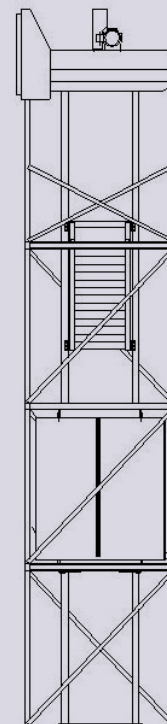
Roller shutter in aluminium.  
Car door.  
Goods lift shelf(s), one or more, fixed or removable.  
Car heating.  
Arrival signals, on all doors if required.  
Car lighting.  
Communication, between floors by intercom.

... All this, and more... on request and subject to current regulations.

Sherpa is a ThyssenKrupp Elevator range of goods lifts which offers the solution.

## Installation principle

### Equi-Lift



**ThyssenKrupp Elevator Manufacturing France**  
Rue de Champfleür - Z.I. Saint-Barthélemy  
B.P. 10746 - 49007 Angers Cedex 01 - France  
[www.thyssenkrupp-ascenseurs.fr](http://www.thyssenkrupp-ascenseurs.fr) (or .com)

