



iWalk

nov model tekočih klančin ThyssenKrupp

ThyssenKrupp DVG dvigala



ThyssenKrupp

iwalk

the easier way

the easier way

Introduction

Configuration

Developments

Comparison

Arrangements

Advantages

References

- General Product Introduction
- Product Configuration
- New Developments
- Comparison vs. Conventional
- Arrangements
- Key Advantages
- References



General Product Introduction

Introduction

iwalk

... is created through an innovative development process



Configuration

iwalk

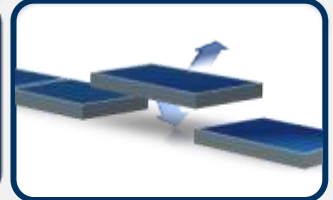
...solves most of the problems of existing designs and establishes a new benchmark



Developments

iwalk

Flexibility and versatility are the most representative characteristics due to its modular structure and easy installation



Comparison

Arrangements

Advantages

References

iwalk

... is designed in response to customers' and users' needs. Safer, more comfortable, and more spacious



iwalk

Welcome to the easier concept: for installation, users, and for the environment

Welcome to the easier way

Two Versions of iwalk

Introduction

Configuration

Developments

Comparison

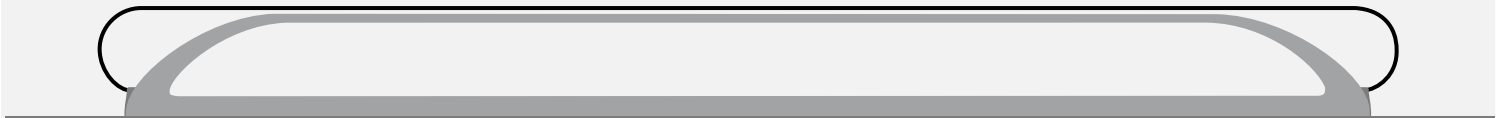
Arrangements

Advantages

References

Horizontal

Horiz.



Inclined

Incl.



Two Versions of iwalk

Introduction

Configuration

Developments

Comparison

Arrangements

Advantages

References

Horizontal

Horiz.

- Current max. length up to 60 m
- Reversible below 60 m
- Angle of inclination: 0–6°
- Pallet width of 1,100 mm or 1,400 mm
- Operation speed: 0.5 m/s or 0.65 m/s
- Current climate class I: indoor use
- Full compliance with
 - EN115-1:2008
 - Machinery directive 98/37/EC and 2006/42/EC
 - EN 12015:2004
 - EN 12016:2004
 - EN 60204-1:2007

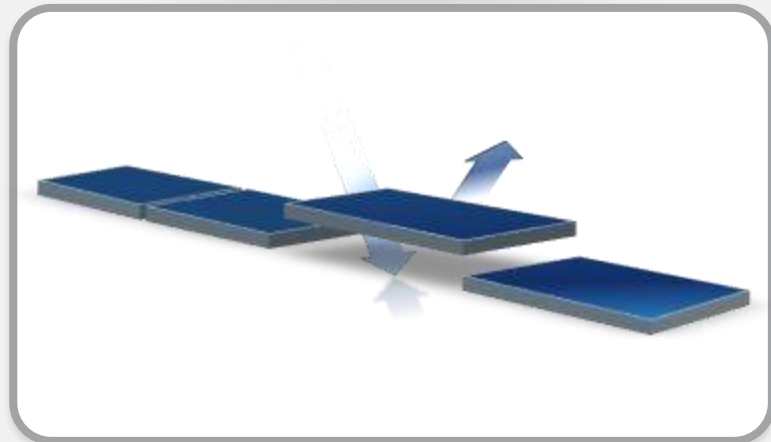
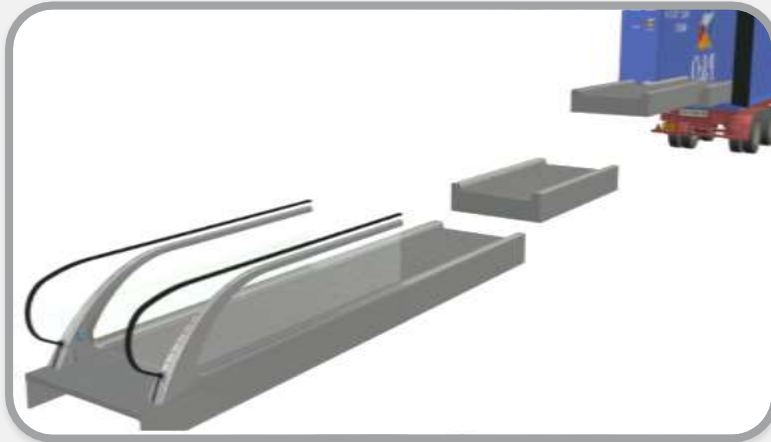
Inclined

Incl.

- Rise from 1.5 up to 7 m
- Outer width 1,505 mm
- Angle of inclination 12°
- Pallet width 1,100 mm
- Operation speed: 0.5 m/s
- Current climate class I: indoor use
- Full compliance with:
 - EN115-1:2008
 - Machinery directive 98/37/EC and 2006/42/EC
 - EN 12015:2004
 - EN 12016:2004
 - EN 60204-1:2007

- Detailed product configuration

Easier Planning



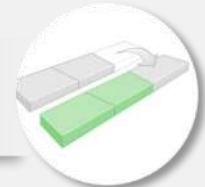
The total length
can be modified



Easier replacement
of damaged sections



Sections can be used
in other units



Relocation of the whole
unit can be done quickly



Introduction

Configuration

Developments

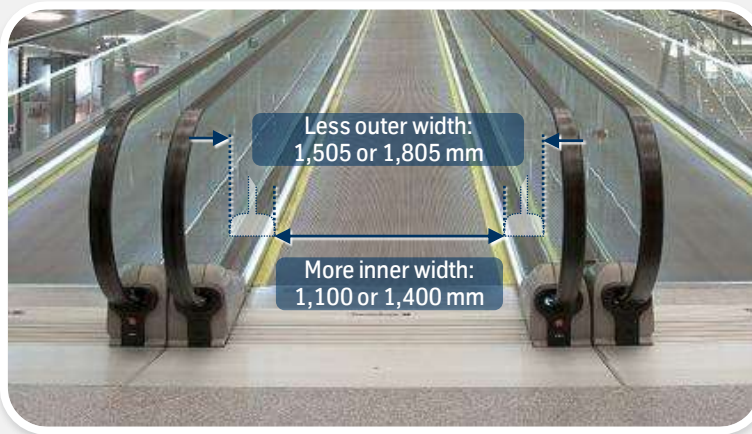
Comparison

Arrangements

Advantages

References

Easier for Users



Less outer width
but more inner width



Wider shopping trolleys
can be used



Introduction

Configuration

Developments

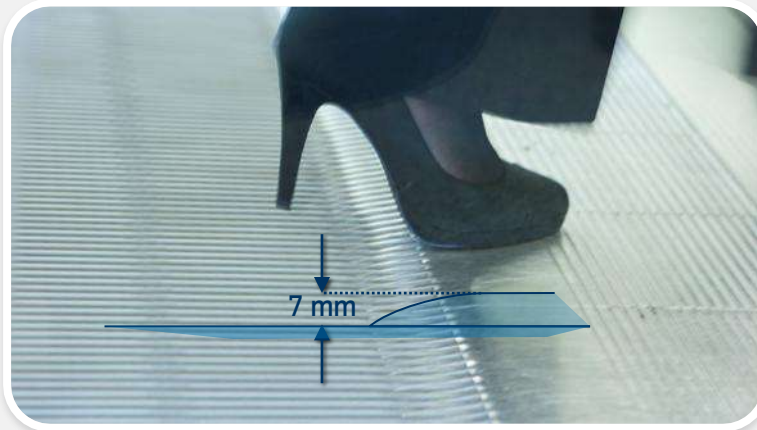
Comparison

Arrangements

Advantages

References

Easier for Safety



Stumbling risk nearly eliminated



Easy exit of the moving walkway when using trolleys



Balustrade over full length

Full handrail guidance for exit and entry areas



Introduction

Configuration

Developments

Comparison

Arrangements

Advantages

References

Easier for the Environment



Lubrication-free pallet band
(chainless pallet band)



Less environmental impact

Reduced material weights
and sustainable transportation

Click here
to go back



Less power consumption due to
new energy-saving systems and
LED lighting



Reduced waste
due to less packaging



Introduction

Configuration

Developments

Comparison

Arrangements

Advantages

References

State-of-the-Art Design

Introduction

Configuration

Developments

Comparison

Arrangements

Advantages

References



LED lighting
Traffic lightening included



No visible fastening elements



Easier Refurbishment



Outer cladding can be easily changed



Introduction

Configuration

Developments

Comparison

Arrangements

Advantages

References

iwalk Shows Strong Advantages

Introduction

Configuration

Developments

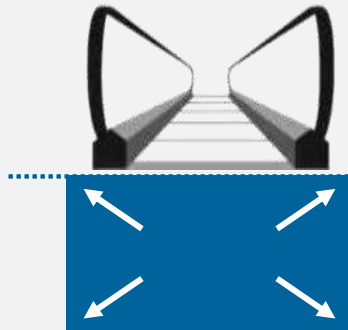
Comparison

Arrangements

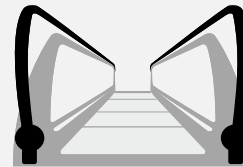
Advantages

References

Conventional
moving walkway



iwalk



reduced pit



pit configuration

pitless configuration ©

Reduced to
less than half of the
required pit depth
(400 mm instead of 1150 mm)

No need
for civil works

iwalk Shows Strong Advantages

Introduction

Configuration

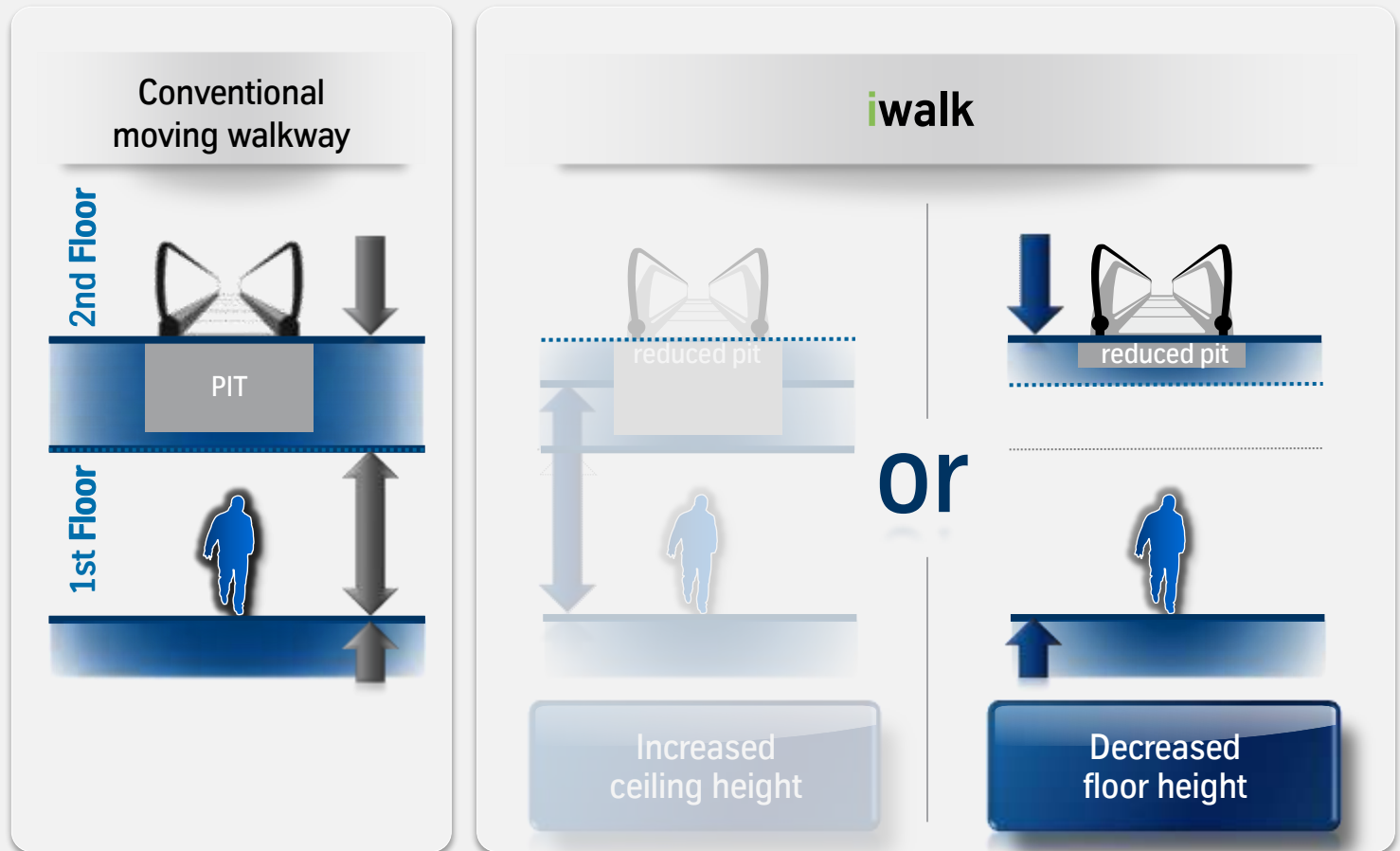
Developments

Comparison

Arrangements

Advantages

References



iwalk Shows Strong Advantages

Introduction

Configuration

Developments

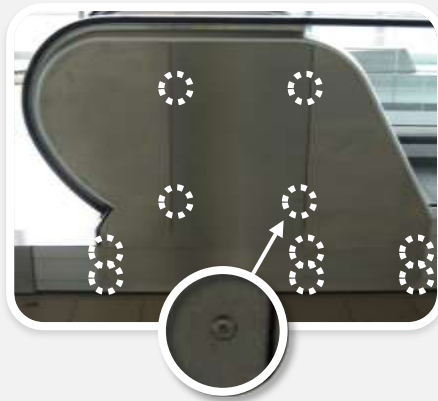
Comparison

Arrangements

Advantages

References

Conventional
moving walkway



Visible fastening elements

iwalk



No visible screws

Detailed comparison 

iwalk Shows Strong Advantages in Competition with InnoTrack

Introduction

Configuration

Developments

Comparison

Arrangements

Advantages

References

InnoTrack



Extra civil work to do
in order to create a side access point at
both heads for maintenance purposes

iwalk



No need
for extra civil works

iwalk Shows Strong Advantages in Competition with InnoTrack

Introduction

Configuration

Developments

Comparison

Arrangements

Advantages

References

InnoTrack



Approx. 0.5 m
separation between the units

iwalk



No space
between units

iwalk Shows Strong Advantages in Competition with InnoTrack

Introduction

Configuration

Developments

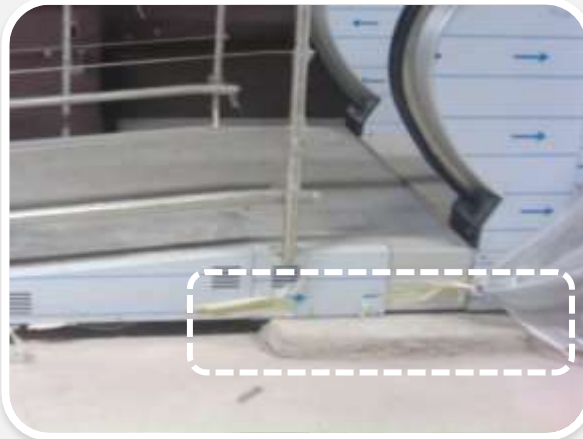
Comparison

Arrangements

Advantages

References

InnoTrack



Extra civil works all along the walkway in order to level the floor and eliminate finishing defects

iwalk



Installed directly over the finished floor

Two Balustrade Arrangements

Introduction

Configuration

Developments

Comparison

Arrangements

Advantages

References

Horizontal

Horiz.



SLIM

Inclined

Incl.



ROBUST



More flexible than conventional designs

- Easier integration
- Easier for buildings
- Easier planning
- Easier relocation
- New business models

- Because of its modular design, easy transportation and installation

- It can be leased for a period of time at different events

Easier for your customers

- Easier for safety
- Easier for users

- More space inside
- Increased comfort
- Reduced stumbling risk

More environmentally friendly

- Lubrication-free pallet band
- Energy-saving systems
- Reduced CO₂ footprint
- Recyclable product
- Less waste

- Reduced moving mass
- LED lighting

- Lower weight (up to 30 %)
- Lower transport volume (less packaging)

Service / Design

- Service
- Design

- High availability
- High reliability

- Modern (aesthetics)
- No visible fastening elements

References

Introduction

Configuration

Developments

Comparison

Arrangements

Advantages

References

Malaga

Malaga Airport

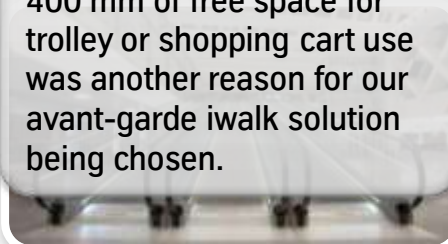
Installation of pitless horizontal iwalks in November 2010 solved the client's problem of carrying out modernization improvements at Malaga Airport without having to perform costly civil work.



Madrid

Atocha Railway Station

Specific client requirements gave us an advantage over other competitors and greatly influenced the decision to install four horizontal and three inclined iwalks from July to September 2010. Our compliance with the newly released EN115 regulation, which requires moving walkways to have 400 mm of free space for trolley or shopping cart use was another reason for our avant-garde iwalk solution being chosen.



São Paulo

Metro Brasil-Paulista

The horizontal iwalk's innovative pitless solution to avoid extra civil work was the main factor in our client's decision to install six horizontal iwalks in the São Paulo Metro in March 2010. The horizontal iwalk can be installed with inclinations of up to 6°.



iwalk

the easier way

the easier way

Thank you for your attention